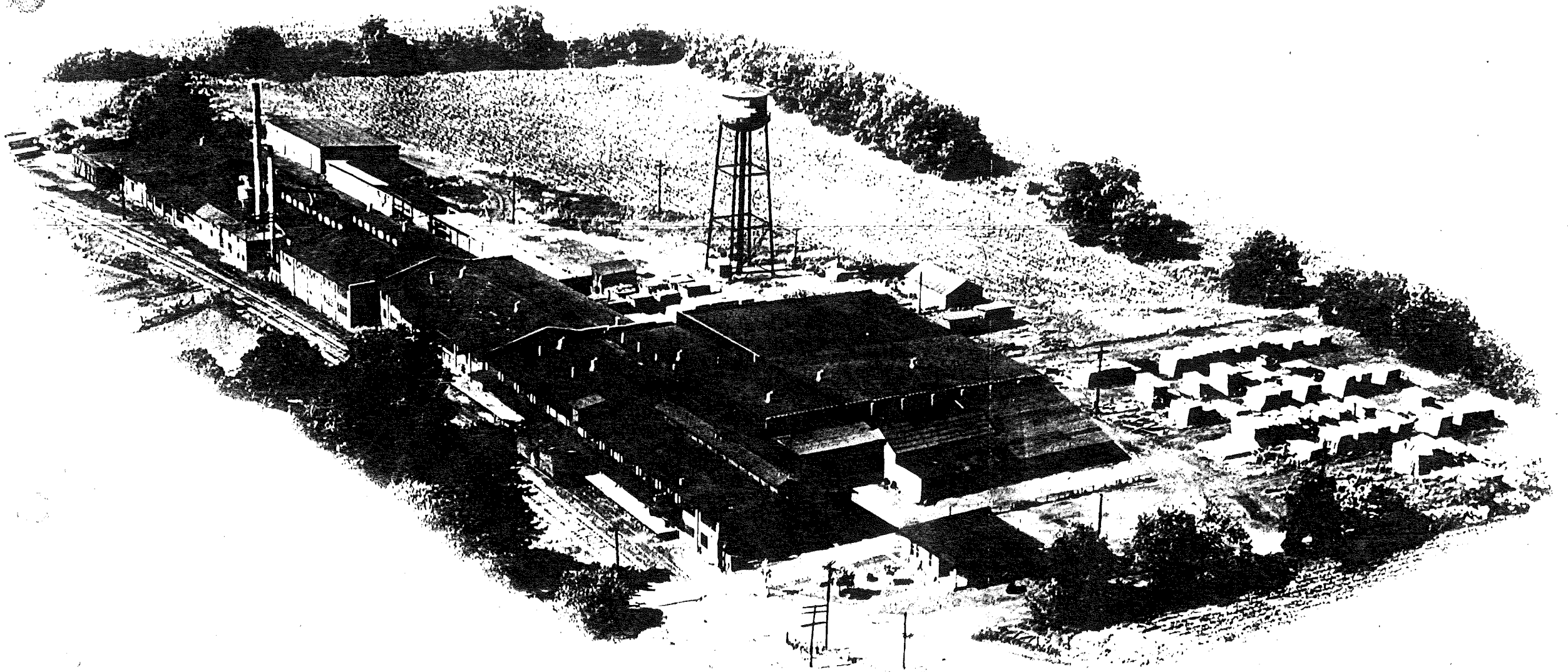
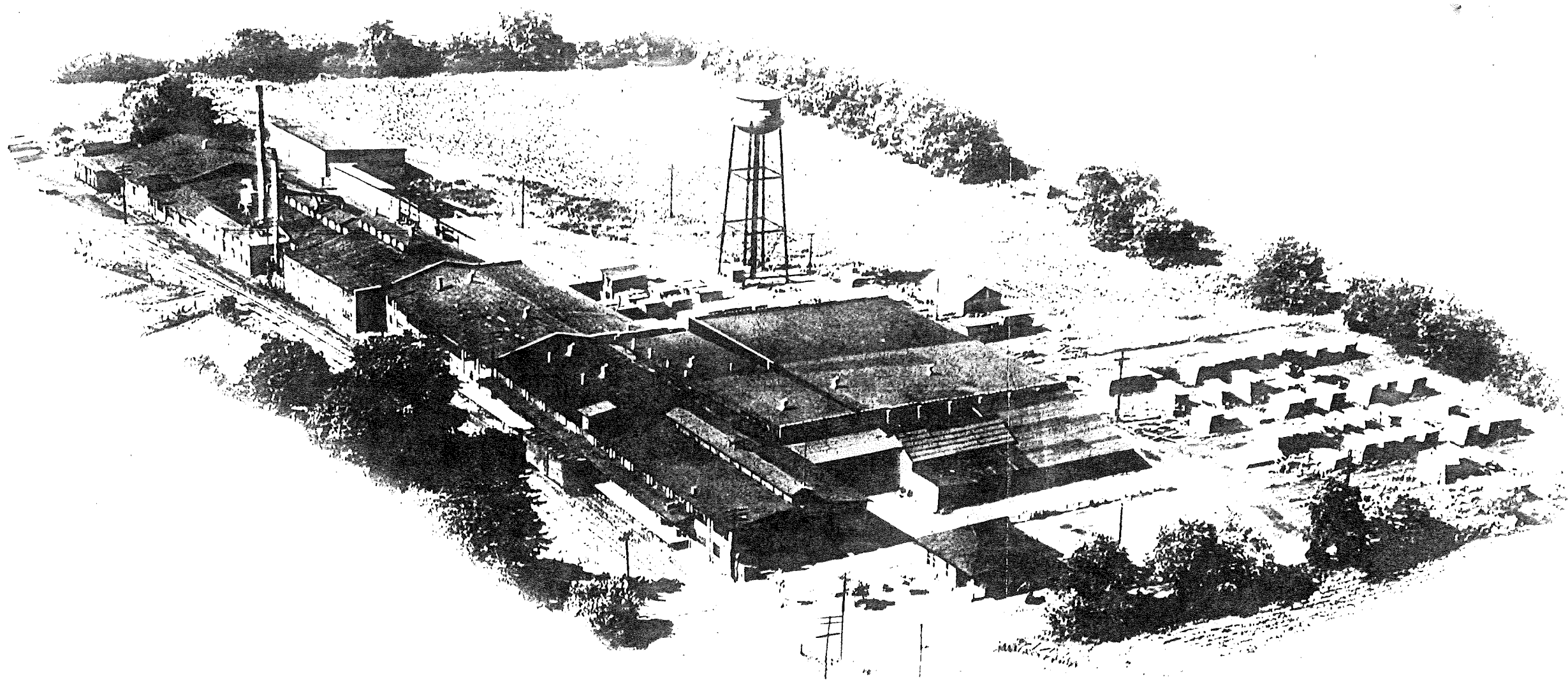


**FREDERICKTOWN, O.**



**FREDERICKTOWN, O.**





**FREDERICKTOWN, O.**

### "The Sandwich Joint."

A number of quarto circulars have been issued by the Philip Carey Company, of Lockland, Cincinnati, Ohio, illustrating and describing the use of Elastite expansion joint in the construction of roads, sidewalks, viaducts and other construction work.

### Fire Hydrants and Valves.

Water-works officials or fire chiefs interested in such equipment will find it worth while to write for the booklet published by Pratt & Cady Company, Inc., Hartford, Conn.

### Road-Making Machinery.

The Universal Road Machinery Company, of Kingston, N. Y., has published a 24-page pamphlet describing in detail the Reliance road-making machinery, and another pamphlet of 8 pages which especially presents the Porcupine scarifier for breaking up hard road surfaces in preparation for road building, maintenance and repairs.

### Metal Signs.

The Standard Sign Manufacturing Company, Penn Avenue and Cullen Streets, Pittsburgh, Pa., has published a 16-page booklet which gives reproductions of many of the porcelain enameled iron signs which this company makes for all sorts of public uses.

### Preserve Your Trees.

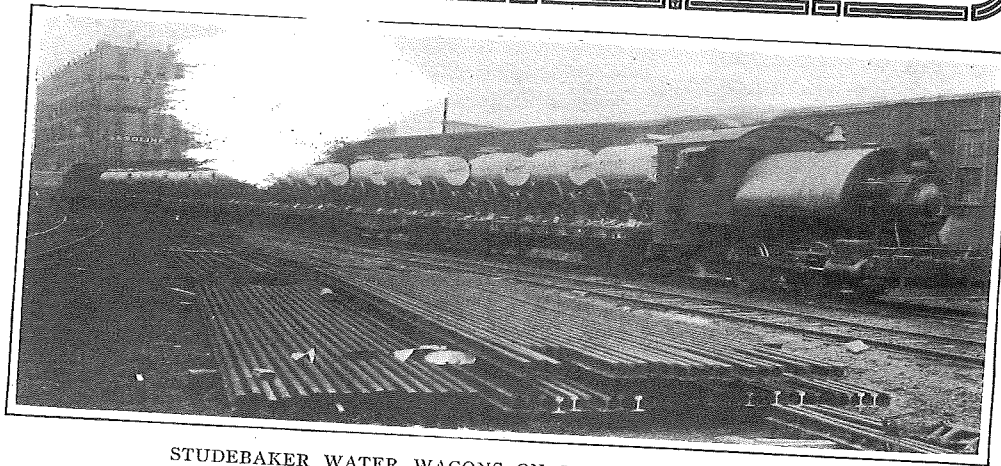
A six-page folder has been issued by Rich & Putnam, of Syracuse, N. Y., with the above message. It tells what the R. P. R. tree paint is and how to use it, and it gives points to be followed for correct trimming of trees, together with testimonials from users of this preservative in city forestry.

### Electric Motors for Fire Trucks, Centrifugal Pumps, Electric Lighting Sets, etc.

Users of motors for any of these purposes will be interested in the specifications of such engines printed in convenient form and distributed by the Van Bleck Motor Company, Monroe, Mich.

## Methods, Materials and Appliances

### News from Engineers, Manufacturers and Supply Houses



STUDEBAKER WATER WAGONS ON THEIR WAY TO MEXICO

### "They're on Their Way to Mexico"

An interesting example of the ability of one of our largest manufacturers to coöperate with the government to further our national preparedness is found in the record recently made by the Studebaker Corporation, of South Bend, Ind., in furnishing the United States Quartermasters' Corps for the Mexican campaign 23 complete water wagons, finished and painted in accordance with government specifications, in less than 48 hours.

When General Pershing was marshaling his forces on the Mexican frontier, preparatory to advancing in pursuit of Villa, the rumors that Villa's followers were poisoning wells and creeks made imperative the providing of the troops with adequate water supply. These

water wagons were converted from regular Studebaker street sprinklers taken from stock. After all the sprinkler attachments had been removed, the manhole openings were closed up; holes were drilled and threaded and faucets inserted. Drum brakes were fitted on all. The wagons were then repainted and refinished and tested thoroughly. The entire order was filled and the wagons on the cars by 4 P. M., Tuesday, March 21—about 48 hours after the order was received, and only about 36 hours after actual work was started. A photograph of the entire shipment is reproduced herewith.

It speaks well for the high quality of these sprinklers that vehicles could be taken out of regular stock and be quickly adapted to meet the government's specifications. It also evi-

### A FEW POINTS OF "PARADISE" SUPERIORITY

To compare "Paradise" Equipment, part for part, with other lines, is to find it infinitely superior in many important details. Roller bearings are used on all swings, flying rings and traveling rings. Fittings are substantial and incorporate no fancy or impractical devices.

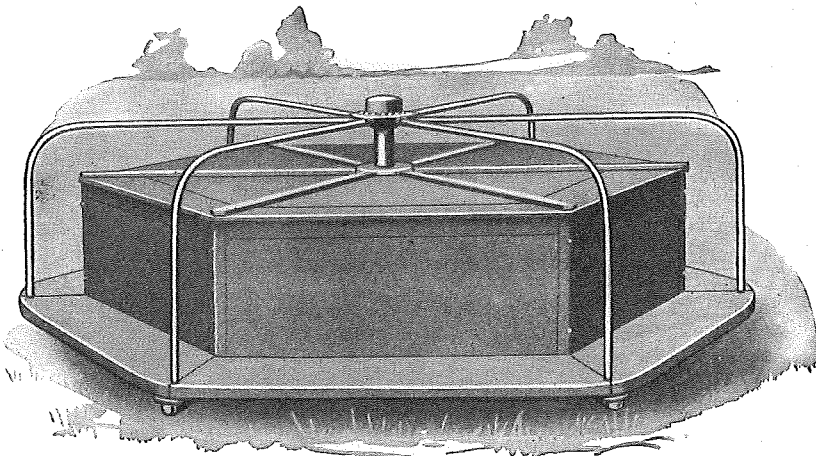
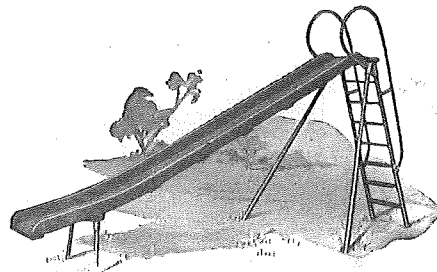
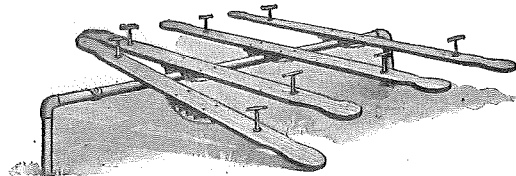
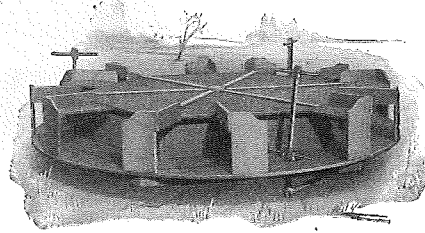
The finest hardwood is used in all swing seats, merry-go-rounds, ocean waves, and teeter boards. Frames are galvanized steel pipe and will withstand the severest strains. Suspensions are galvanized steel chain and are strong and absolutely safe.

### PLANNING ASSISTANCE

Our playground planning department is for your convenience. Just tell us your ideas, the size of the lot and the amount of appropriation. We will then submit a most efficient ground layout with specifications and prices. This service will incur no obligation.

The "Paradise" catalog is an elaborate portrayal of the complete Paradise line. It is filled with photos, information and suggestions on equipment. Our new booklet "Paradise Playgrounds—How to Plan Them" contains valuable hints on planning. These treatises are yours for the asking. Write today!

"That Vacant Lot—A Pleasure Spot!"



# AMERICAN PLAYGROUND DEVICE COMPANY

Parks and Playground Equipment  
ANDERSON, INDIANA

## PLAYGROUNDS ARE NEEDED BECAUSE

THEY DEVELOP: Ambition, Health,  
Honesty, Initiative, Imagination, Jus-  
tice, Obedience, Purity of Mind, Self-  
confidence.

THEY DIMINISH: Delinquency, Gang-  
spirit, Idleness, Rowdiness, Selfishness,  
Temptation, Unfairness.



## AMERICAN PRODUCTS

Basket Ball Outfits.  
Climbing Poles.  
Giant Strides.  
Home Gym Outfits.  
Horizontal Bars.  
Jumping Standards.  
Ladders (Climbing, Horizontal and  
Teeter).  
Merry-Go-Rounds.  
Ocean Waves.

Parallel Bars.

See-Saws.

Swings sets of all kinds.

Slides with straight and wave chutes  
from ten to forty feet in length.

Travelling Rings.

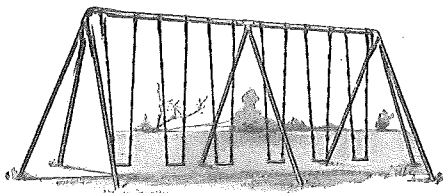
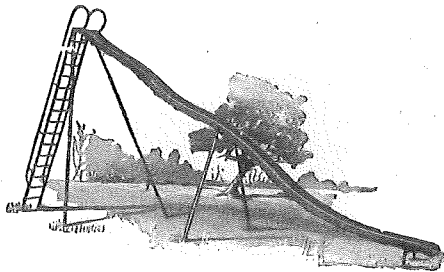
Outdoor Gymnasium combinations fur-  
nished to specifications—blue prints of sug-  
gested outfits will be submitted upon re-  
quest.

# THE F. B. ZIEG MFG. COMPANY

Improved Playground Equipment

200 Mount Vernon Avenue

FREDERICKTOWN, OHIO



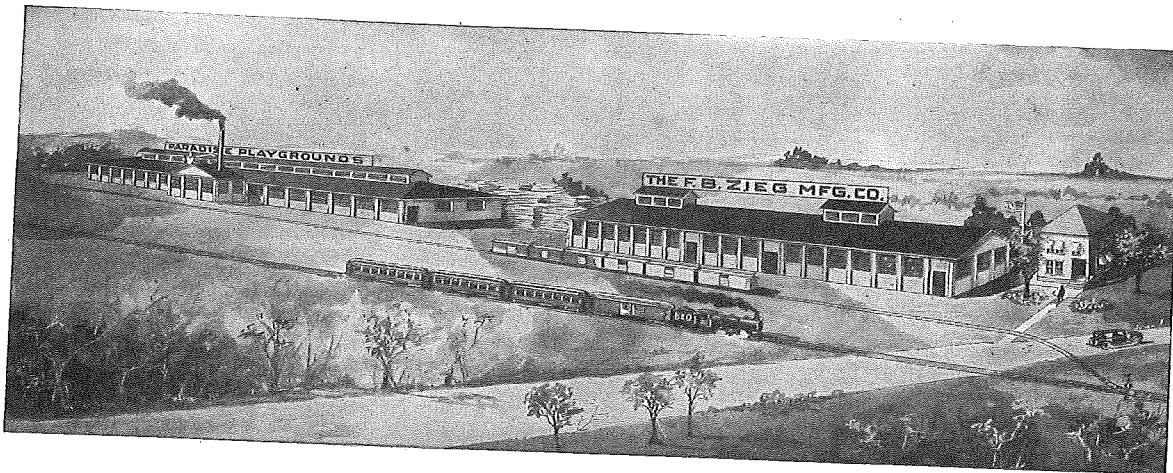
PLAYGROUND EQUIPMENT  
LAWN AND PORCH SWINGS  
CAMP EQUIPMENT  
FOLDING CHAIRS

The part that the playground plays in the protection of children and their mental, moral and physical development, is a very important one. This is a deserving subject that is being given increasing consideration by municipalities.

## BETTER PLAYGROUNDS

The highest quality of playground is the most economical and the most satisfactory in the long run. The Paradise Line embodies the highest quality equipment, the greatest number of items at the lowest consistent cost. There is no need to sacrifice in any direction.

Exceptional manufacturing facilities and nearness to the sources of materials permit us to offer the finest equipment at prices formerly paid for inferior apparatus.



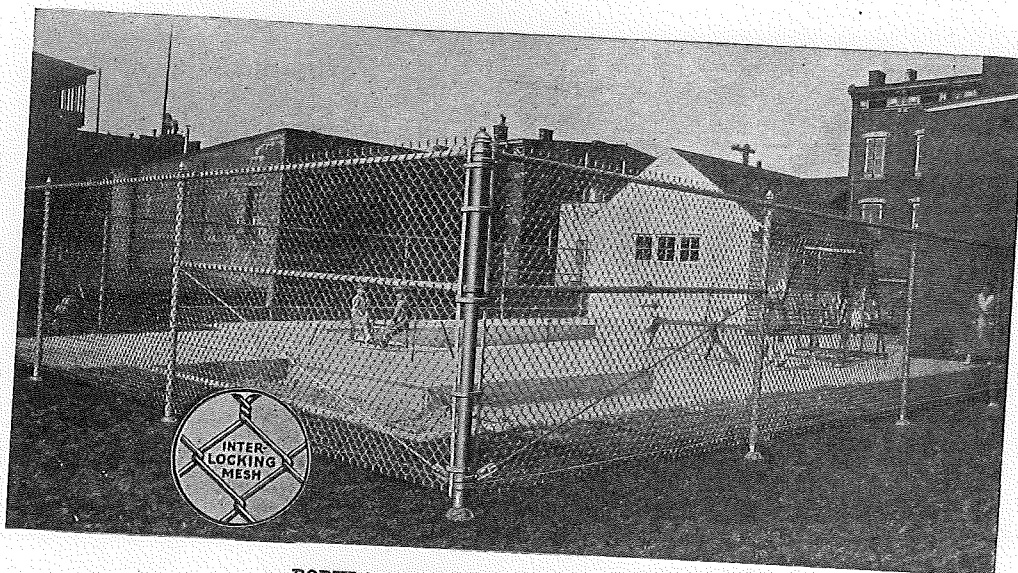
1925 Municipal Index



**IRON AND CHAINLINK FENCE  
FOR ALL PROPERTIES**

Play Grounds, Parks, Schools, Colleges,  
Jail Yards, Courthouses, Cemeteries, Hos-  
pitals, Infirmaries, Estate Properties,

Bridge Approaches, Retaining Walls, Sta-  
diums and Athletic Fields, Fair Ground  
Property, Reservoirs, Filtration and Set-  
tling Basins.



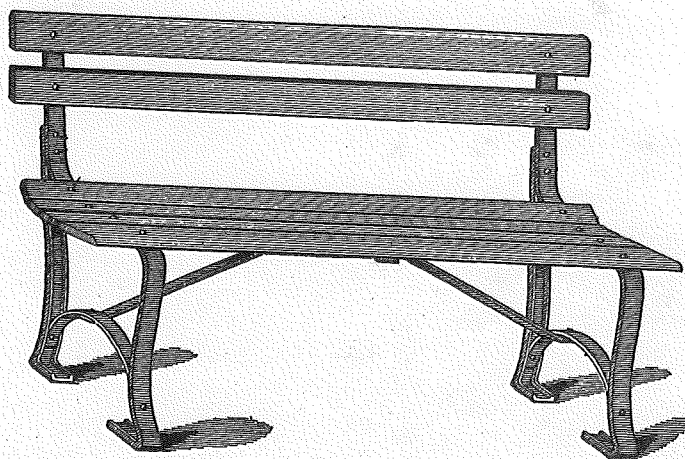
POPULAR STYLE OF CHAINLINK FENCE

In our Wire Fence Division we make a specialty of Stewart's chainlink highway safety guard fabric, used extensively for dangerous points along highways. If interested write for particulars.

Tell us how many of these Settees you need and we will quote quantity prices.

**STRONG, COMFORT-  
ABLE, LASTING**

These three qualities are what you want in a Park Settee. They are the qualities that distinguish the Stewart No. 370.



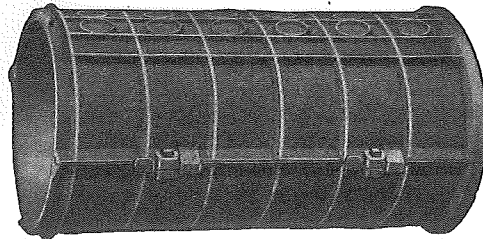
NO. 370 PARK SETTEE  
Steel Frame and Wood Slats 4', 5', 6' Long

THE AMERICAN CITY

## The "Panama Line"



**7 Exclusive Patented  
Features Commend  
This Culvert Pipe**

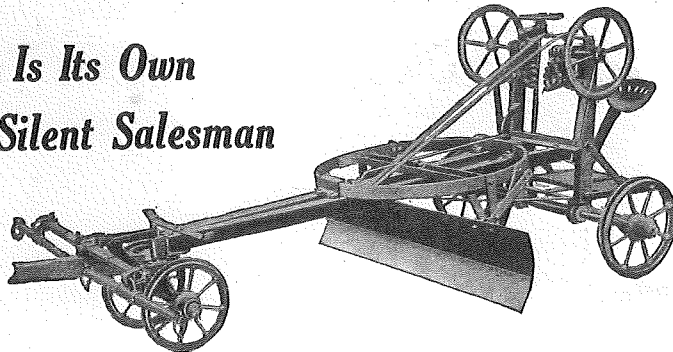


### he "Panama" Round Culvert Pipe

gives to purchasers seven distinct points of superiority. They combine to give good facilities in shipping, unusual convenience in installing, strength and protection against the elements when installed and the very maximum of service.

These are points which every practical road engineer, official, and contractor considers essential, and he has only to read the complete description of this pipe as given in the "Panama Line" Catalog to immediately note the unusual value and entire practicability of these exclusive features.

### This Machine Is Its Own Silent Salesman



#### The Word "Panama"

as applied to road graders, drags and kindred tools stands for paramount quality—is a coveted name, in fact, upon which a high reputation has been built.

If you do not already have it, you will want to give the "Panama Line" Catalog a permanent place in your library.

The  
F. B. Zieg  
Mfg. Co.  
Fredericktown,  
Ohio.

Gentlemen —  
Send your "Panama  
Line" catalog as offered in  
THE AMERICAN CITY.

Name.....

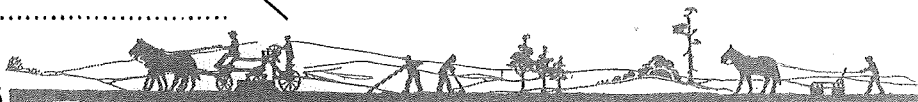
Address.....

MAIL OR USE FOR MEMORANDUM

#### The Boston Grader

That the Boston Grader is a machine of very exceptional value is convincingly indicated in the fact that wherever introduced its performance results in many additional orders. It is light enough for two horses and strong enough for four and can be quickly adapted for use as a drag.

We claim the Boston Grader to be the most practical low priced grader ever made, to be more substantially constructed and to embody more features of approved design than any similar machine in existence. You will want to judge for yourself, however, and consequently will want complete information as given in the "Panama Line" Catalog.

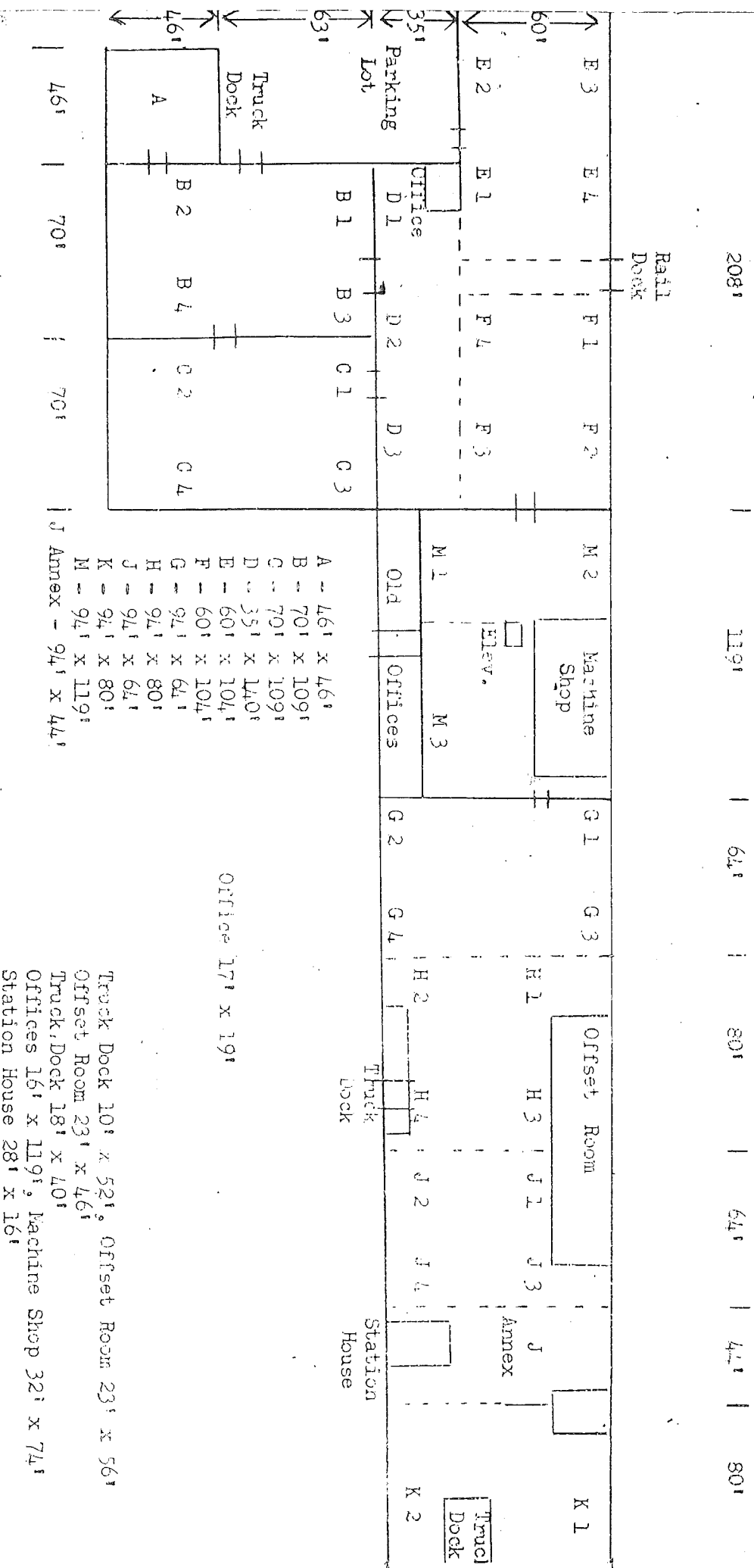


THE F. B. ZIEG MFG. COMPANY  
Fredericktown, Ohio

When writing to Advertisers please mention THE AMERICAN CITY.



CROWLEY WAREHOUSE  
FREDERICKTOWN, OHIO



Works No. 11, Mt. Vernon, Ohio  
Industrial Engineering Department  
September 22, 1971



